



FR 4242914539 - N° 97266  
BREEDER : EARL DU PETIT CLERDAN  
DAM : NUCHESSE / 4-305 / 10955Kg / 38,2 / 34,8

SOLIDS POWERFULL HEALTH GRAZING

## PRODUCTION

Milk Synthesis **+40**

82 daughter(s) - 71 Herd(s) - Rel. 90%

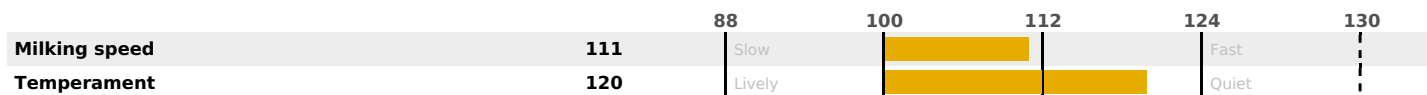
MILK	PROT. (KG)	FAT (KG)	PROT. (%)	FAT (%)	DIGER
<b>+581</b>	<b>+31</b>	<b>+35</b>	<b>+0.17</b>	<b>+0.19</b>	<b>0.4</b>

K-CAS	B-CAS
<b>BB</b>	<b>A2A2</b>

## FUNCTIONAL

CALV. EASE	D. CALV. EASE	CALF VIT	D. CALF VIT.
<b>95</b>	<b>95</b>	<b>95</b>	<b>95</b>

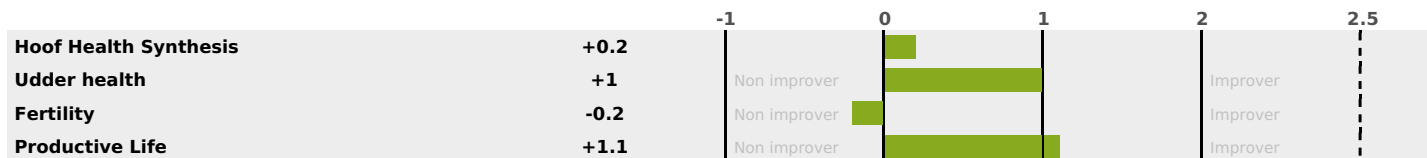
MILCA : MIF / MTCP : MTF / MTETR : MTRF



## HEALTH

**1.1**

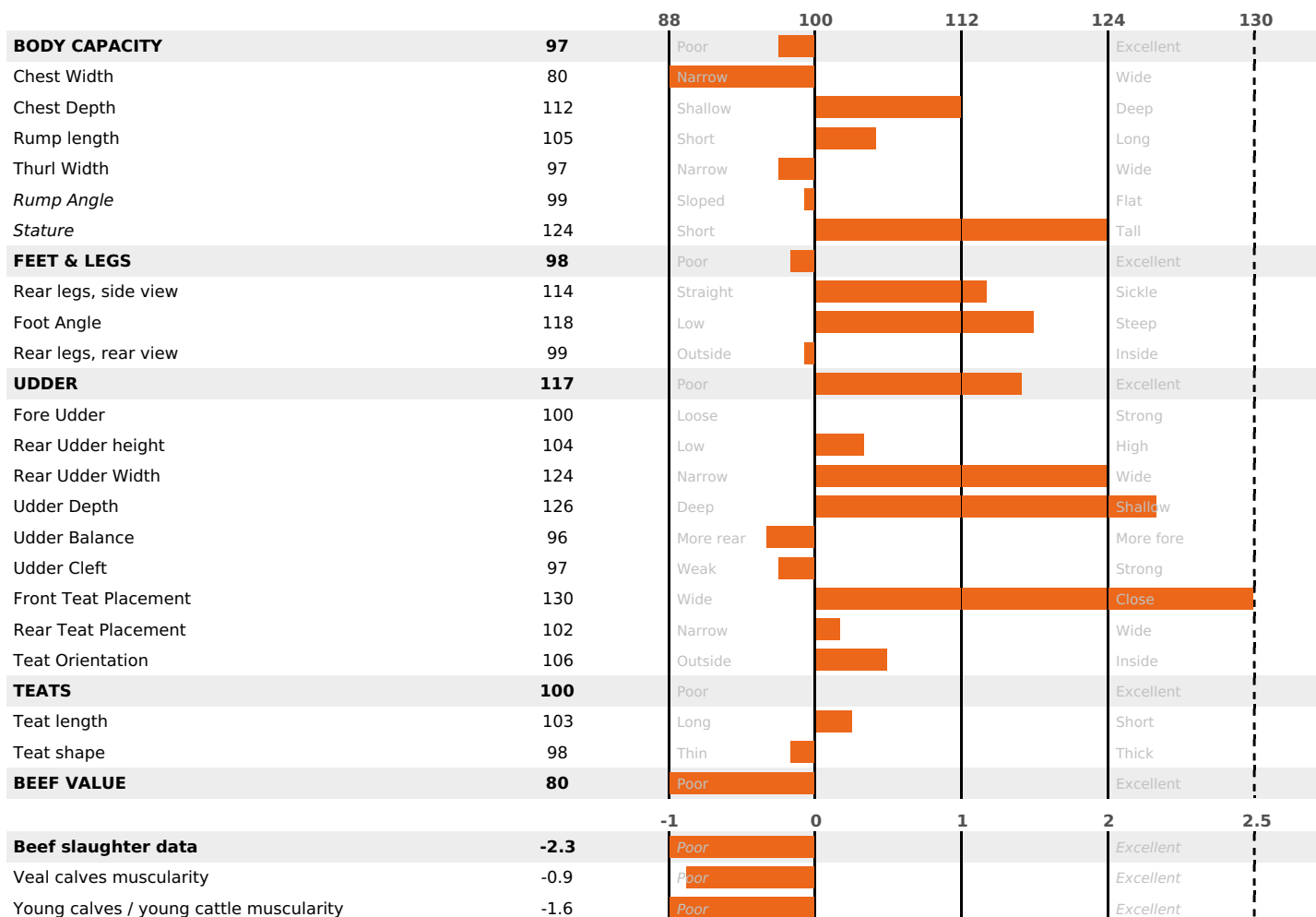
NEW



## TYPE

**104**

22 daughter(s) - 21 Herd(s) - Reliability 70



NEW