

MONTBELIARDE

UBALDI

ISU 180

**TOP ISU
MONTBELIARDE**

**MILK +1163
TEMPERAMENT 130
HEALTH +2,5**



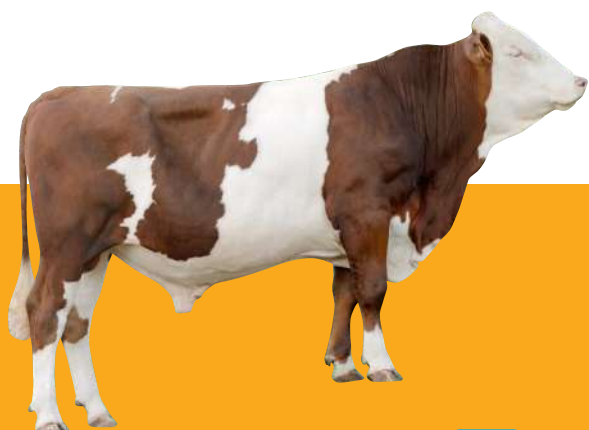
New Montbeliarde proofs run April 2025

The first proofs run released this year came with the base change.

Due to the Montbeliarde breed genetic progress, all bulls got their proofs decreasing a bit.

In details, it means -6,6 ISU points with -105 kg Milk & -2.27 Type, for all Montbeliarde bulls.

Among the TOP 20 ISU Montbeliarde bulls, 19 are from UMOTEST-COOPEX bulls stud, COOPEX Montbeliarde is definitely once again the Leader for Montbeliarde genetics.



ULADRU #1 MILK



**MILK +1738 BODY CAPACITY 124
TEMPERAMENT 121**



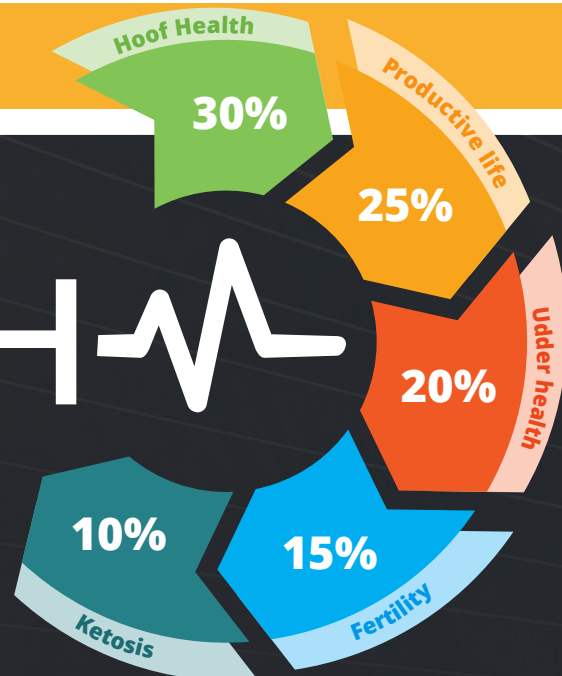
UCELLO #1 HEALTH



**HEALTH +4,0 UDDER 131
MILK +958**

Coopex
MONTBELIARDE
THE MONTBELIARDE WORLDWIDE

HEALTH



What if you could identify quickly cattle which are the easiest to manage and the most resistant to diseases not to impact their career? This is now possible with the HEALTH proof.

The HEALTH proof combines Ketosis, Fertily, Productive Life, Udder Health, and Hoof Health proofs, grouped into a single composite proof. Animals with a positive value (>0) for Health proof, are more resistant and stronger against all diseases and issues in farming.

HOOF HEALTH

HOOF HEALTH - STPI (30%)

Since December, Hoof Health proof synthesis (STPI) and two composite synthesis are available to work more specifically on mechanical injuries (SLM) or infectious lesions (SLI).

How to use Hoof Health proofs?

The Hoof Health Synthesis leads to an improvement on global hoof health selection and on the 8 diseases identified in the Montbeliade breed. But you can also use separately one of the two composite index synthesis to improve either mechanical injuries or infectious lesions.

HOOF HEALTH SYNTHESIS PROOF STPI

SLI
50%

Infectious Lesions Synthesis

- > Digital Dermatitis (50%)
- > Interdigital Hyperplasia (25%)
- > Heel Horn Erosion (25%)



SLM
50%

Mechanical Injuries Synthesis

- > White Line Disease (45%)
- > Sole Ulcer (30%)
- > Sole Hemorrhage Circumscribed Form (10%)
- > Corkscrew Claw (10%)
- > Sole Hemorrhage Diffused Form (5%)



HEALTH



**LEADER FOR FITNESS TRAITS
HEALTH & EASY CALVING**

UZAKI 

Health +3,3 / Temperament 123 / Udder 131

TICTAK 

Health +3,6 / Udder 140 / Type 136

OBERNAY 

Health +3,4 / Udder 126 / Proven

GRAZING



**MEDIUM SIZE COW / AVERAGE STATURE
STRONG FEET & LEGS / GREAT GRAZING
CONVERTER / GOOD LOCOMOTION**

THOMSON 

+0,27% Fat / Milk +1286 / Feet & Legs 116

ULAHOOOP 

+0,26% Fat / Stature 96 / Feet & Legs 123

PINKFLOYD 

Fertility +2,6 / Stature 99 / Proven

HETEROZYGOUS POLLED



UKLIC P 

BEEF VALUE 110 / Feet & Legs 115 / Easy calving

RANGER P 

HEALTH +2.7 / HOOF HEALTH +1.0
UDDER HEALTH +1.5

SPENCER P 

MILK +1121 / PRODUCTIVE LIFE +1.6
TEMPERAMENT 112

TASSIMO P 

BEEF VALUE 126 / CHEST WIDTH 126
TEMPERAMENT 116

POWERFULL



STRENGTH SPECIALIST
CHEST WIDTH IMPROVER
HIGH BEEF VALUE
GREAT BODY CAPACITY

URION 

Beef Value 116 / Chest Width 121 / ISU 180

TRONCY 

Chest Width 120 / Beef Value 115 / Health +3,2

SYROCCO 

Beef Value 123 / Chest Width 115 / Milk +1193

HIGH
PRODUCTION



HIGH MILK VOLUME
TOP YIELD BULLS

TOMSAWYER 

Milk +1639 / Temperament 129
+123 kgs Fat & Protein

REPEAT 

Milk +1678 / Feet & Legs 116
+134 kgs Fat & Protein

PALADIO 

Milk +1440 / SCC +2,0 / Proven

SOLIDS



HIGH FAT% & PROTEIN % / K-CASEIN
CHEESE SPECIALIST / FROM'MIR

UXYBEL 

+0,19 % Prot / +0,52% Fat / Udder 137

SKIPER 

+0,32 % Prot / +0,30% Fat / Caseins BB &
A2A2

TRICOLOR 

+0,28% Prot / +0,45% Fat / Milk +912

MONTBELIARDE CHAMPION



Topaze (PANCHO)



Salome (OMELO)



Santanoise (OPTICOM)



Pocahontas (MILLENIUM)

OPEN DAY AUGUSTEA HERD, ITALIA



550 cows
100% Montbeliarde
purebreed



6 200 000 l
8 milking robots



40 kg
average cow
production



11 376 kg
3.84%F 3.58%P
SCS 190 000



1,5
straw / pregnancy

Cooperc
MONTBELIARDE
THE MONTBELIARDE WORLDWIDE